



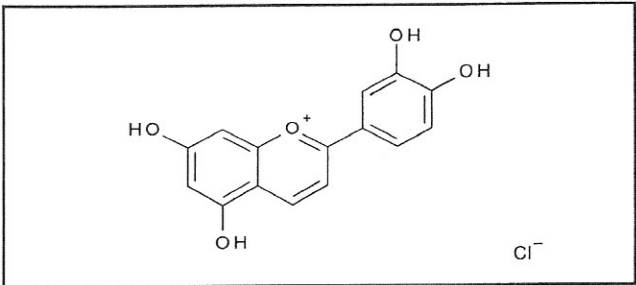
INDOFINE Chemical Company, Inc.

121 Stryker Lane, Bldg. 30
Hillsborough, NJ 08844 USA
Phone: (908) 359-6778; Fax: (908) 359-1179

Certificate Of Analysis

020925S LUTEOLINIDIN CHLORIDE Lot No.: 19102911

CAS RN	1154-78-5
MOL FORMULA	C ₁₅ H ₁₁ O ₅ Cl
MOL WEIGHT	306,68



TEST	METHOD	UNIT	SPECIFICATION	RESULT
Appearance	Visual		Dark powder	Conform
Potency	UV		ε (499 nm, MeOH+0,1% HCl) = 35 000 +/- 3000	37440
Water content	KF	% w/w		5,5
Residual solvents	GC-HS	% w/w		0,2
Inorganics	ICP-MS	% w/w		0,2
Purity	HPLC	% area	≥ 95,0	98,2
Assay	Calculated (*)	% w/w		92,4

(*) Assay = Purity by HPLC x (100 - %water - %solvents - %inorganics)

CHROMATOGRAPHIC PURITY / HPLC

Column : Atlantis dC18 - 4,6x150 mm - 3 μm
 Mobile phase : Gradient: B from 5% to 60% in 20 min then 60% to 100% in 5 min then 5 min isocratic 100%
 A = Water + 10% HCOOH / B = MeOH
 Detection : UV 485 nm

Temperature : 30°C
 Flow rate : 1 ml/min
 Injection volume : 5 μl
 Injection solvent : MeOH + 0,1% HCl

